

*Final Report for Public Consultations among
Key Stakeholders in Fisheries Sector in Belize for
BL-LI 042: Promoting Sustainable Growth in the
Blue Economy (Revised Version)*

Submitted by:
Social Development Consultant: Dr. Minerva Pinelo,
Managing Director at Right Insights



Submitted to:
Inter-American Development Bank (IDB)



May 18, 2023



Contents

Introduction.....	4
Project Overview	4
1.1 Project Components.....	4
1.1.1 Component 1:.....	5
1.1.2 Component 2:.....	5
1.2 Project Beneficiaries.....	5
Purpose of the Public Consultation Report	5
Background to Public Consultations	6
Objectives of the Public Consultations.....	7
Methodology Used	10
Communities Pre-Selected for Public Consultations	10
Diversity Characterization	11
Translation	11
Main Findings via Public Consultations for BI-L1042.....	12
Challenges in achieving project results	12
Lack of Trust Between Fisherfolks and the Government of Belize (GoB)	12
Security Concerns While Out at Sea.....	13
Increased Number of Approved Fishing Licenses	13
Lack of Pension Scheme for Aging Fishers.....	13
Responses Shared by Government Of Belize Officials Based on Participants' Queries & Concerns	14
Additional Insights – Responses Shared by Participants During Small Group Discussion	17
Priorities/Needs Of Fisherfolks.....	17
Challenges & Limitations.....	17
Possible Risks	18
Mitigation Actions	18
Recommendations.....	20



Annex I: Attendance Records	22
Annex II: Demographics of Fisherfolks – By Gender	34
Annex III: Demographics of Fisherfolks – By Ethnicity	36
Annex IV: Agenda for Public Consultations	37
Annex V: Guide for Small Group Discussion	39
Annex VI: Copy of Invitation to Stakeholders Attending Public Consultation	40
Annex VII: Photos of Public Consultations At 3 Coastal Communities In Belize.....	45
Annex VIII: Copies Of Powerpoint™ Presentations In English & Spanish Respectively.....	48
Project Overview & Rationale (In English)...	48
Project Overview & Rationale (Adapted In Spanish)	50
Results Of Environmental And Social Assessment (In English) Cont.	54



INTRODUCTION

Project Overview

The Government of Belize through the Ministry of Blue Economy & Civil Aviation (MBECA) and the Ministry of Finance, Economic Development, and Investment is in the process of finalizing a loan operation with the Inter-American Development Bank (IDB) to fund a five-year project entitled “Promoting Sustainable Growth in the Blue Economy” (BL-L1042). The project aims to improve income generation capacity of artisanal fisherfolks and to maintain export levels of fisheries products considering the sustainable use of oceanic resources within Belize’s blue economy framework. Specific objectives of the project include: (i) enhancement in the Government’s ability to sustainably manage key species in the fisheries sector and (ii) supporting the successful implementation of Individual or Group Business Plans for artisanal fisherfolks aimed at promoting the adoption of sustainable technologies and best fishing practices, as well as the diversification of their income.

The proposed project “Promoting Sustainable Growth in the Blue Economy” is to contribute to the sustainable growth and diversification of the Belizean Blue Economy, generating the information, the capacities, the governance structure, and the initial investments to improve fisher incomes in the lobster, conch, and finfish marine economy.

A Strategic Environmental and Social Assessment was prepared to identify and evaluate the possible risks and socio-environmental impacts of the activities proposed in the “Promoting sustainable growth in the blue economy Program” as well as to propose socio-environmental measures to guide its implementation, complying with the Social Performance Standards (ESPS) and the IDB Environmental and Social Policy Framework (ESPF).

As a result of the assessment process, it was verified that the operation BL-L1042 is classified as “Category B”, where the socio-environmental impacts are of small and medium scale interventions. In addition, a Stakeholders Engagement Plan (shown in Annex 2 of the Strategic Environmental and Social Assessment report) was developed to support the preparation and execution of a consultation process with stakeholders.

I.1 Project Components

The general objective is to contribute to sustainable growth in the country's blue economy through improved fisher incomes and export earnings within the framework of the country’s Maritime Economy Plan (MEP). The specific objective is to develop the enabling environment and to implement select small scale investments (hard and soft) across the fisheries value chain, for a competitive, sustainable, and resilient finfish-oriented fisheries sector and maritime economy investment. To achieve those results, the project will finance goods and services, structured under two components as follows:

The general objective of this operation is to improve incomes of artisanal fisherfolks and strengthen export earnings of the fishery sector in Belize.



I.1.1 Component 1:

Strengthening the capacities of government institutions for the sustainable, inclusive, and resilient management of the fisheries sector of Belize

- to improve the Government's ability to sustainably manage key species in the fishery sector,

I.1.2 Component 2:

Direct support to fishers and fishing groups for sustainable and inclusive development of the fisheries sector of Belize

- to promote the adoption of climate-friendly and sustainable technologies by artisanal fisherfolks as well as best fishing practices

I.2 Project Beneficiaries

The beneficiaries will be vulnerable populations who are individual entrepreneurs (including fishers), members in associative arrangements, and/or owners of MSMEs of the selected sectors. The operation will pay particular attention to women, youth, indigenous people, afro-descendants, and migrants. The operation will have a national coverage.

PURPOSE OF THE PUBLIC CONSULTATION REPORT

The purpose of the public consultation report is to document the public consultation process undertaken, inclusive of the comments, concerns and questions received from the key stakeholders in relation to the proposed project. In addition, the public consultation report is to highlight main findings and recommendations by the social development consultant based on feedback received by fisherfolks, in three coastal communities in Belize during April 2023. The consultations supported direct engagement by the Government of Belize (GoB) as part of the requirement as Borrower in compliance with the Environmental and Social Performance Standard - ESPS 10: Participation of stakeholders and information disclosure.



BACKGROUND TO PUBLIC CONSULTATIONS

According to the Inter-American Development Bank's (IDB's) Environmental and Social Policy Framework and the Environmental and the Social Performance Standard ESPS 10: Participation of stakeholders and Information Disclosure, category B projects to be financed by IDB require for public consultation processes to be executed in the different phases of the project cycle.

Public consultations, aligned to the Joint Publication of the Multilateral Financial Institutions Group on Environmental and Social Standards' Meaningful Stakeholder Engagement, were conducted in three (3) communities in Belize – Sarteneja Village on April 11, 2023; Belize City on April 13, 2023; and Independence Village on April 18, 2023. The public consultations engaged a registered total of one hundred and seventy-eight (**178**) **participants** with one hundred and forty-two (**142**) **fisherfolks**, four (**4**) **fishing cooperatives and associations**, eleven (**11**) members of **civil society organizations (CSOs)**, members of **academia, private sector and representatives of the financial institutions**, and twenty-one (**21**) **Government officials**. The public consultation process was co-led by the Blue Economy Unit (BEU) and the Belize Fisheries Department (BFD) within the Ministry of Blue Economy and Civil Aviation (MBECA) and the Central Executing Unit (CEU) within the Ministry of Economic Development. See [table 1](#) for breakdown of participants per session and [Annex I](#) for attendance records. [Annex II](#) and [III](#) provide a breakdown on demographics of participants by gender and ethnicity respectively.

All sessions exceeded the two (2) hours initially projected as participants were highly engaged in the sessions and time to provide clarification on the proposed project was warranted. In all sessions, time had to be allocated to clarify the purpose of the public consultation as participants were often ready to make public complaints against the Government of Belize (GoB) instead. Each session allowed for initial presentations by CEU in support of the project overview and the environmental and social considerations for the *BL-L1042 Promoting Sustainable Growth in the Blue Economy* (see [Annex IV](#) for the public consultation agenda).

After each presentation, questions were addressed by Government officials leading the process; these are pertinent to environmental and social performance standards (ESPS). Time for small group discussions were also allotted during the sessions in Belize City and Independence (see [Annex V](#) for guide for small group discussion). In Sarteneja, a large group discussion was conducted instead as participants shared their queries and concerns openly instead.



OBJECTIVES OF THE PUBLIC CONSULTATIONS

In compliance with IDB requirement to conduct public consultations before the approval of the operation, the Government of Belize (GoB), as the Borrower, engaged with key stakeholders and rolled out a full disclosure of relevant project information, including project design and associated activities, as well as project-related environmental and social risks and impacts. In compliance with the Environmental and Social Performance Standard ESPS 10: Participation of stakeholders and Information Disclosure, the Stakeholder Engagement Plan (developed as part of the Strategic Environmental and Social Assessment) was utilized to guide the planning and execution of the public consultation process. The targeted number of participants per public consultation session was forty (40). Participants were invited directly by the GoB through a letter of invitation or through invitation flyer, at least one week prior to each session (see [Annex VI](#) for copy of invitation flyer and letter). During the sessions, the GoB was able to provide explanations of intended project impact.

The objectives of the public consultations included:

- (1) assessing the level of risks as perceived by key stakeholders' (such as fisherfolks', with particular focus on women, indigenous and afro descendants (IPADs), cooperatives, associations or other independent or organized groups in fisheries);
- (2) engaging key stakeholders directly in identifying priority issues;
- (3) building and maintaining constructive relationship with all stakeholders in the fisheries sector;
- (4) identifying where possible, feasible investment opportunities in the fisheries sector and within the scope of the proposed BL-L1042 loan.



Table I: Number of Key Stakeholders Per Public Consultation

Group No.	Type of Stakeholder	Description of Stakeholder	# of participants in Sarteneja Village	# of participants in Belize City	# of participants in Independence Village
G1	Fisherfolks	The stakeholders in this group are considered potential beneficiaries of the project. This group includes fishermen and places specific focus on other vulnerable groups such as women, youth, indigenous peoples, and afro descendants (IPADs).	60 ¹	20	62
G2	Fishing cooperatives, associations, independent groups and other organized groups	The stakeholders in this group are considered potential beneficiaries of the program (i.e. executive members of cooperatives). This group also includes the different organized groups that may have an interest in the project's actions but are not registered.	2	2 ²	1
G3	Support Organizations	The stakeholders in this group are considered drivers of value chains for the fishing sector as they play an important role in the research, processing, distribution, trading, and marketing of products. Examples of these key actors include but are not limited to regional organizations, academia, civil society groups, the private sector, and representatives of the financial institutions.	0	11	0

¹ Please note the number only reflects those who signed the attendance voluntarily. Approximately 20 fisherfolks refused to sign the attendance sheet.

² Please note the executive member of National Fisheries Producers Cooperative attended both sessions in Sarteneja and Belize City; as such for purpose of monitoring and evaluation (M&E) only 4 associations are counted.



G4	Government or Statutory Bodies	The stakeholders in this group support the direct implementation of development projects and may include but are not limited to government agencies, line ministries and other quasi-government bodies.	5	13	3
-----------	---	---	---	----	---

Total Participants: 178



Key Elements Considered for Public Consultations

Methodology Used

The stakeholder engagement process commenced on April 11, 2023 and were co-led by the Blue Economy Unit (BEU) and the Belize Fisheries Department (BFD) within the Ministry of Blue Economy and Civil Aviation (MBECA) and the Central Executing Unit (CEU) within the Ministry of Economic Development. The consulting firm, Right Insights, was present to record questions, queries, and concerns of participants as well as to document the Government of Belize (GoB's) responses as part of its requirement as the Borrower.

The public consultation sessions were conducted via face-to-face modality and allowed GoB to disclose relevant project information, including project design and any associated activities. During the first presentation, the project overview, activities under both components and explanations of intended project benefits were discussed. During the second presentation, project-related environmental and social risks and impacts, proposed mitigation measures and action plans (or management plans) under the Strategic Environmental and Social Assessment (SESA) were disclosed. The participants present shared many grievances, queries, and concerns on past projects but more importantly confirmed their agreement to proposed project activities under both components 1 and 2.

Once presentations had been completed, Right Insights sought to identify priority issues from the participants' experiences, opinions and insights, during a small group activity (see [Annex V](#) for questions used to guide the discussion). During such discussions, participants formed groups of 4-5 persons and discussed key questions. A rapporteur, from each small group, was selected to then report back to the larger group. At least five (5) Government officials were present at each public consultation, namely one (1) representative from the BFD, one (1) representative from the BEU, one (1) representative from MBECA and two (2) representatives from CEU.

Communities Pre-Selected for Public Consultations

In order to achieve meaningful public consultations with fisherfolks and other stakeholders in coastal communities in Belize, it was important to identify at least three (3) communities to cover the northern, central and southern coast of Belize. As such the following communities had been pre-selected:

Northern Belize: Corozal District

- April 11th, 2023: Sarteneja Village
- Venue: Village Community Center

Central Belize: Belize District

- April 13th, 2023: Belize City
- Venue: Belize Biltmore Plaza

Southern Belize: Stann Creek District

- April 18th, 2023: Independence Village
- Venue: The SENter (managed by Village Council)



Diversity Characterization

The consulting team, Right Insights, had expected to engage both indigenous peoples, namely fishers of Yucatec Maya descent in northern Belize and afro descendants (Creoles and Garifunas) in central and southern Belize. In addition, a registry (dated July 2022) from the BFD indicates that the largest number of women fishers are found in the Stann Creek District, followed by the Belize District so it was expected that a greater number of women would be engaged in both districts. The highest number of women's participation was recorded in southern Belize; **10 female fishers participated with 9 being from southern Belize and 1 being from northern Belize** (see [Annex II](#) for breakdown by gender).

It must be noted, however, that very few Mayas, Garifunas and Creoles were engaged in the process as many participants described themselves as **Mestizos³ (105 fisherfolks)**. See [Annex III](#) for breakdown by ethnicity.

Translation

In order to accommodate the language preferences by participants, the session in Sarteneja was conducted in Spanish and translation was provided by the BEU, the CEU and the consulting team at Right Insights. In addition, Right Insights translated handouts from English to Spanish in order to provide participants with information in their language of preference. The BEU and Right Insights also worked collaboratively on translating the PowerPoint presentations to ensure that information shared was also easily available for native Spanish speakers, should the need arise. The above considerations were in direct support to ESPS7 and ESPS10. See *copies of handouts [here](#) and PowerPoints™ [here](#). Screenshots of PowerPoint™ presentations can also be found in [Annex VIII](#).*

³ In Belize, there are two salient issues when discussing ethnicity; (i) Belizeans may define themselves as belonging to one ethnic group given their orientation to identity and community (e.g. Mayas in Belize will define themselves as Mopan or Ke'kchi (Ketchi / Q'eqchi') in western and southern Belize; in the north people choose to self-identify as Mestizo instead of Yucatec Maya and (ii) Belizeans may choose not to ascribe to one ethnic group only as they consider themselves a mixture of two or more ethnic groups (e.g. a few participants at the public consultations chose not to disclose their ethnicity).



MAIN FINDINGS VIA PUBLIC CONSULTATIONS FOR BL-L1042

The sessions yielded great participation from fisherfolks who were very vocal about their past experiences on the lack of transparency in decision-making through documentation, public disclosure, and feedback to stakeholders during past projects by GoB and non-profit organizations (NGOs). Their concerns ranged from aspects of challenges in achieving project results, lack of trust between the GoB and/or NGOs and fisherfolks, security concerns while out at sea given the increase of sea piracy, increase in the number of fishing licenses approved and lack of pension scheme for aging fishers. Below is a summary of concerns recurrent at all three (3) consultations and highlighting possible areas for reviewing in the project design.

Challenges in achieving project results

Fisherfolks expressed grave concern on past experiences with both governmental and non-profit organizations' implementation of projects that yielded little to no benefits; there were many anecdotes of support promised that remained unfilled. Fisherfolks reported that various components on diversification from fishing of a government project, such as pig rearing did not provide equitable benefits for communities and few fishers benefitted from the funding received. In addition, an example was that a non-profit organization promised to engage youth in marine conservation. In the opinions of fisherfolks, it did not provide any support to participants who had been recruited and had collected data on behalf of that non-profit organization. Fisherfolks were in consensus that the BL-L1042 must ensure that funds benefit fisherfolks directly and were in full support and agreement with component 2 which will provide matching grants.

Lack of trust between fisherfolks and the Government of Belize (GoB)

Fisherfolks expressed frustration and disillusionment after repeatedly being consulted by the GoB and not obtaining sufficient follow-ups once project designs were finalized in the past. Many reported having little to no say in project designs that often adversely impact their livelihoods. There were many instances when participants became confrontational with GoB officials claiming that the corruption inherent in the government agencies continue to silence their cry for regulatory changes such as the increasing no-take zones listed under the Managed Access Program (MAP)⁴. There were recurrent concerns on the inability to access Area 9 as artisanal fisherfolks. Fisherfolks from southern Belize, expressed concern about the limited access to productive zones resulting from the demarcation under the MAP.

⁴ This program aims to reduce fishing pressure and the incentive to fish illegally by providing traditional fishers with secured fishing grounds.



Security concerns while out at sea

Fisherfolks from northern Belize, expressed concerns about confronting illegal fishing by both foreign fisherfolks as well as native fisherfolks. There are grave concerns on danger while being out at sea (sea piracy) and fisherfolks reported having lost many relatives due to lack of security for fishers by the Belize Coast Guard. Belize Coast Guard representatives provided clarification about their resource limitations – i.e. fuel shortage which hinders their security role during the closed season making it increasingly difficult to patrol and detain illegal fishers along the coast of Belize.

Increased number of approved fishing licenses

Fisherfolks from central Belize, expressed concerns on the growing number of licenses being issued by the Belize Fisheries Department (BFD) and requested a reassessment of carrying capacity (i.e. number of fishers) per area. It was noted that an assessment of fishing area activities to efficiently utilize areas in alignment with Fisheries legislations and policies must be conducted. This would address the issue of overfishing. Thus, the management plans proposed under component 1 can support in addressing such concerns of possible overfishing and saturating the market with additional fisherfolks.

Lack of pension scheme for aging fishers

Fisherfolks expressed concerns about the lack of social protection via a pension scheme for aging fisherfolks. While Social Security Board (SSB) offers the option to pay self-employed, a few fishers reported paying towards a pension scheme or having had the opportunity to apply for self-employed contributions. This aspect warrants clarification with SSB on encouraging fisherfolks to pay under self-employed option and would necessitate a direct relationship between fishing cooperatives, associations, independent groups and the SSB.



RESPONSES SHARED BY GOVERNMENT OF BELIZE OFFICIALS BASED ON PARTICIPANTS' QUERIES & CONCERNS

It is important to note that while GoB officials responded to questions posed by participants during each consultation, there were also recurrent themes of concerns raised by stakeholders. Most of these concerns were less project-related and linked to a lack of redress via a functional grievance mechanism within an inter-agency approach. While the structure of a grievance mechanism to address issues raised by fisherfolks and other stakeholders, may necessitate further discussion outside of the scope of BL-L1042, it is key that GoB officials design a plan for reporting back to participants, on how participants' feedback will be incorporated into future project and mitigation design and activities, and into the environmental and social action plans, to improve the quality, sustainability, and acceptability of the BL-L1042 project and any other future projects.

The questions that were specifically related to the proposed BL-L1042 are listed below and grouped (where applicable) for comprehensive and thematic response, along with responses provided by CEU, BFD or BEU, respectively. These questions are aligned to ESPS1 (*Assessment & Management of Environmental & Social Risks & Impacts*), ESPS2 (*Work & Working Conditions*), ESPS3 (*Efficiency in the Use of Resources & the Prevention of Contamination*), ESPS4 (*Community Health & Safety*), ESPS6 (*Conservation of Biodiversity & Sustainable Management of Living Natural Resources*), ESPS8 (*Cultural Heritage*) and ESPS10 (*Participation of Stakeholders & Information Disclosure*).

1. What fishing area is the project being focused on?

Response by CEU: The project has a national scope and will be focusing on all 9 areas of Belize but it will allow for a better assessment of resources via component 1 which will undertake several studies for the development of management plans, particularly in area 9.

2. Why is the project focused on fishing area 9? Considering that the project is focused on fishing area 9, will the section of fishing area 9 that is currently defined as high protection for biodiversity zones in the south be opened? Will Area 9 be opened to artisanal fishers? Will a regulatory framework for finfish fishery in fishing area 9 be developed?

Response by CEU: The project will conduct specific studies to better assess opportunities for greater management of resources (i.e. knowledge management for the sustainable development of the finfish fishing industry, knowledge management for the sustainable development of spiny lobster and queen conch fisheries industry and Information Management System for the fisheries sector).

Response by BFD: The Managed Access Program (MAP) was designed to ensure that a healthy fish stock is secured. Area 9 is open to those with permits to fish within this area and conduct deep sea fishing. A supplementary regulatory framework will be proposed in support for finfish fishery in fishing area 9.



3. How will the fishers directly benefit from this project? Can individual fishers apply for a matching grant or is the matching grant directed only to cooperatives and associations? What is the project's maximum financing contribution per fisher?

Response by BEU: Fisherfolks will directly benefit from the project and may apply as individuals or as groups. Each fisherfolk may apply for up to USD 5,000. Fisherfolks will apply and a committee will be formed to select successful fishers under the matching grant process. The composition of the committee has not been finalized. Fishers will be screened based on a set of eligibility criteria which will be defined after the project's approval.

4. How will eligible fishers be selected? Which group or committee will select eligible fishers?

Response by BEU: Fishers will be asked to submit a business plan which will be reviewed for eligibility under the matching grant program. The committee to select eligible fishers will certainly be disclosed to all fisherfolks. Perhaps this is the time to make your recommendations on such composition.

5. Can duty exemption be granted to fishers under matching grant for importation of equipment, etc.?

Response by CEU: There is no exemption agreed upon, but it would be a request that would have to be reviewed by the Ministry of Economic Development.

6. What are eligible technologies that the matching grant funds can be utilized?

Response by CEU: Under the matching grant a list of eligible and ineligible technologies will be listed. These discussions are still being finalized but will be provided to fisherfolks as part of the application process for matching grants.

7. Why is majority of the project funds allocated to component 1 rather than component 2?

Response by CEU: There is a need to conduct key studies and to develop management plans for sustainability of finfish fishery. Thus component 1 will ensure that there is institutional strengthening via the sustainable and resilient management of the fisheries sector with the support of the proposed management plans.

8. What measures are in place for security of fishers accessing Area 9?

Response by BFD: Presently the Belize Coast Guard (BCG) are tasked with security at sea and supporting with patrols once complaints are made.



9. How can environmental laws address solid waste pollution in these communities and enforce sanctions?

Response by BEU: The Department of the Environment is responsible for enforcement of environmental laws and this information will be shared with DoE.

10. What regulatory changes/amendments can be made to sanction fishers who fish undersized species?

Response by BFD: The Ministry of Blue Economy & Civil Aviation (MBECA) is the body in charge of reviewing regulations to sanction fishers. This is an issue being discussed at the Ministry level given frequent cases of fisherfolks caught during closed season and with undersized species.

11. Has this project been approved by IDB? When is this project expected to be approved by IDB?

Response by CEU: This is the first phase of the project design which allows the GoB to consult directly with fisherfolks and other stakeholders before the project is approved. The loan negotiation process continues after the consultations with IDB providing feedback by September of this year.

12. What is the expected date of project implementation?

Response by CEU: The project implementation would begin in late 2023 or early 2024 but information on the set date would be provided by the Ministry of Economic Development and primarily through the project manager at the CEU.



ADDITIONAL INSIGHTS – RESPONSES SHARED BY PARTICIPANTS DURING SMALL GROUP DISCUSSION

Additionally, during the small group discussions, fisherfolks were asked to share examples of priorities/needs, challenges/limitations and suggest mitigation actions. *Copies of their responses (verbatim) can be found [here](#).* Below is a brief summary of their responses.

Priorities/Needs of Fisherfolks

When asked what support would be needed by fishers in their communities, the following responses, which include but are not limited to, were provided by fisherfolks:

- increased catch by securing availability of healthy fish stocks;
- increased security for fisherfolks, their catch and their equipment (to minimize theft of equipment – e.g. boat engines);
- increased financing for equipment (e.g. freezers, fishing gears, boat engines or boat repairs) and particularly to offset low/closed seasons;
- operational and technical support from inter-government agencies;
- introduction of pension scheme for fisherfolks as many are working beyond retirement;
- reassessment of number of fishers per area to determine/project the demand on fish stocks per area;
- diversification of livelihoods into hospitality, particularly expressed by the few women participants (e.g. creation of restaurants, bed and breakfast, etc.)

Challenges & Limitations

The greatest barriers faced by fisherfolks in Belize, as reported during the consultations, include but are not limited to:

- areas restricted by the Belize Fisheries Department under the MAP;
- lack of patrols to minimize poaching in all areas and sea piracy;
- natural disasters such as hurricanes which destroy their traps and boats;
- conflict created by free dives versus trap fishers;
- lack of access to credit (i.e. ineligibility for small loans);
- lack of transparency among association members;
- corruption in the Belize Fisheries Department (BFD);
- lack of use of technology;
- lack of addressing the needs of the majority of fisherfolks via projects that have a short to medium term implementation phase (i.e. there is little to no sustainability built into projects);
- lack of mechanism for proper evaluation of damages (e.g. after shocks from natural disasters);
- increased pollution in coastal communities with little support from community to minimize such;
- fuel subsidies for fisherfolks similarly to those provided to cane farmers and tour operators post-COVID-19;



- non-governmental organizations (NGOs) are given too much power (e.g. a non-profit organization's ban on gill nets continues to be a point of contention among fisherfolks);
- unregulated prices for lobster and conch.

Possible Risks

The following risks, which include but are not limited to, were underscored by fisherfolks and must be considered for future projects:

- the impact of natural disasters and loss of traps, fishing camps and other investment; there is no contingency line item at the national emergency level to offset damages for the fishing sector; fisherfolks reported that after Hurricane Lisa in October 2022, there was little to no direct support in the recovery process for the fishing sector;
- with fisherfolks working beyond retirement age, there is a likelihood to increase health and safety risks for aging fisherfolks; working in senior years is necessitated by the lack of pension schemes for fishers;
- persistent issues between the GoB and fisherfolks are not being addressed before project implementation or proper consultation processes which continues to fuel tension and cynicism among these key stakeholders;
- if more reserves are demarcated, it is perceived that this will lessen access to productive zones by fisherfolks;

Mitigation Actions

When asked about their suggestions for specific programs, services or support to assist fishers in overcoming the barriers identified, the following, which include but are not limited to, were provided:

- creation of management plans for regulating each type of fishers;
- proper consultations and knowledge management via outreach from key stakeholders; this may address the lack of trust fisherfolks have expressed when engaging with GoB;
- regulation on use of equipment (e.g. pots versus shades);
- regulation on the number of shades;
- support for business plans from BELTRAIDE⁵;
- project impact must ensure that fisherfolks are supported directly (e.g. matching grants) and that there is adequate financing to fully equip fisherfolks to new fishing methods;
- emergency plans for the fishing sector with direct input from stakeholders (e.g. hurricanes);
- waivers for fisherfolks such as duty exemption on boat engines; this would be requested via the Ministry of Economic Development;
- increase patrols at sea, particularly during closed seasons;
- increased involvement of fisherfolks at all levels (during project design and implementation) for greater opportunity to voice concerns and describe direct impacts;

⁵ Belize Trade and Investment Development Service is the official Trade and Investment promotion agency of the country of Belize



Fisherfolks Feedback to Proposed Components of BL-L1042

Fisherfolks are generally both in agreement with components 1 and 2 of the proposed BL-L1042 project and made a specific request under component 1. Fisherfolks requested to be included when conducting the exploratory fishing studies as they would like to shadow the scientists who will be undertaking these studies. One of the rationales of fisherfolks is that many studies do not include direct consultation with fisherfolks and end up making recommendations that alter their livelihoods significantly and even threaten their ability to provide for their households.

Fisherfolks are in full agreement of component 2 and willing to apply for matching grants. A request made by fisherfolks, and one already included in the proposed project, is technical assistance. A few fisherfolks have asked that support be given for development of business plans and the majority of fishers were more interested in direct assistance for equipment. The GoB officials assured fisherfolks that support for the development of the individual or group plans has been considered under technical assistance which will be provided during project implementation.



RECOMMENDATIONS

During all consultations sessions, fisherfolks voiced concerns, tabled queries and sought clarification on a number of issues. The sessions allowed for GoB officials to answer questions directly or to reiterate regulatory aspects. The relationship between GoB and fisherfolks requires a delicate balance of providing information to dispel misconceptions and at the same time provide follow-up to queries. There were many questions asked that were not within the scope of the proposed project and so it became important to underscore the purpose of the consultation session

Fisherfolks demonstrated a great need for more outreach activities to ensure that information on BL-L1042 is clearly communicated. As such, a **communications and outreach strategy** must be developed and rolled out with sufficient time to educate fisherfolks on the benefits of the project and their eligibility for matching grants. The communication and outreach strategy will ensure that potential beneficiaries are kept abreast of the project's launch and implementation phases with support from the Project Manager and Environmental and Social Specialist at the CEU. It should also ensure that vulnerable groups, once defined, are informed in a timely manner and engaged throughout the project.

Regarding the activities under component 1, the fisherfolks requested to be included when conducting the exploratory fishing studies as they would like to shadow the scientists that will be undertaking these studies.

The concept of matching grants, while not a new concept for fisherfolks, has been implemented via their communities or organizations and not directly to fisherfolks. The GoB officials provided examples to clarify and going forward specific examples of this model must be included in future **information sessions**. Fisherfolks have also requested information on the criteria and mechanism to be used when selecting beneficiaries. It will be important that GoB provides follow-up to such questions during subsequent information sessions. Transparency in decision-making through documentation, public disclosure, and feedback to stakeholders can mitigate against lack of trust expressed by fisherfolks. In order to sustain a meaningful relationship with fisherfolks the following questions must be considered by GoB:

- How will the stakeholders be informed about project decisions and how will their views and inputs be addressed?
- How will systematic records of consultation events be kept and shared with stakeholders?

Therefore, it is important that GoB develops a mechanism for reporting to stakeholders on how stakeholder feedback was incorporated into project and mitigation design and activities, and into the environmental and social action plans.



In addition, the development of business plans will require extensive technical assistance to ensure that all communities receive the same level of support. This may warrant **agreements with service providers** such as but not limited to BELTRAIDE, academia (universities and junior colleges in each district) and other financial institutions (e.g. credit unions).

In conclusion, during the face-to-face consultations the Government of Belize drew from participants' opinions, experience and observations and responded to key questions as stipulated by the Joint Publication of the Multilateral Financial Institutions Group on Environmental and Social Standards' *Meaningful Stakeholder Engagement*. The participants at the consultations confirmed their agreement to the proposed project activities under both components 1 and 2. In addition, participants had no objection to the proposed environmental and social measures nor had different environmental and social impacts. With such insights, the GoB can now better inform the process of stakeholder identification and analysis as the Borrower.



ANNEX I: ATTENDANCE RECORDS⁶

Sarteneja Village Participants



Attendance Sheet for Fisheries
Public Consultations for BL-L1042

Date: April 11, 2023
Location: Sarteneja Community Centre

PRINT NAME	COMMUNITY	GENDER (M/F)	ETHNIC GROUP
	Santana Corral	M	Mestizo
	Copper Bank	M	Mestizo
	Copper Bank	M	Mestizo
	Copper Bank	M	Mestizo
	Copper Bank	M	Mestizo
	Copper Bank	M	Mestizo
	Copper Bank	M	Mestizo
	Sarteneja	M	Mestizo
	Sarteneja	M	Mestizo
	Sarteneja	M	Mestizo
	Sarteneja	M	Mestizo

⁶ Records shared protect participants' right to remain unnamed



Date: April 11, 2023
Location: Sarteneja Community Centre

Attendance Sheet for Fisherfolks
Public Consultations for BL-L1042

PRINT NAME	COMMUNITY	GENDER (M/F)	ETHNIC GROUP
	Sarteneja Corozal	M	Mestizo
	Sarteneja Corozal	M	Mestizo
	Sarteneja Corozal	M	Mestizo
	Sarteneja Corozal	M	Mestizo
	Corozal	M	Mestizo
	Sarteneja	M	Mestizo
	Sarteneja	M	Mestizo
	Sarteneja	M	Mestizo
	Sarteneja	M	Mestizo
	Sarteneja	M	Mestizo
	Sarteneja	M	Mestizo
	Sarteneja	M	Mestizo



Attendance Sheet for **Fisherfolks**
Public Consultations for BL-L1042

Date: April 11, 2023

Location: Sarteneja Community Centre

PRINT NAME	COMMUNITY	GENDER (M/F)	ETHNIC GROUP
	Sarteneja	M	Mestizo
	Sarteneja	M	Mestizo
	Sarteneja	M	Mestizo
	Sarteneja	M	Mestizo
	Sarteneja	M	Mestizo
	Sarteneja	M	Mestizo
	Copper Bank	M	"
	Copper Bank	M	"
	Sarteneja	M	"
	Sarteneja		
	Sarteneja	M	"
	Sarteneja	F	"



Attendance Sheet for **Fisherfolks**
Public Consultations for BL-L1042

Date: April 11, 2023
Location: Sarteneja Community Centre

PRINT NAME	COMMUNITY	GENDER (M/F)	ETHNIC GROUP
	Sarteneja	F	mestizo
	SARTENEJA	M	MESTIZO
	sarteneja	M	mestizo
	sarteneja	M	Mestizo
	Sarteneja	M	Mestizo
	sarteneja	M	Mestizo
	Sarteneja	M	Mestizo
	sarteneja	M	Mestizo
	Sarteneja	M	Mestizo
	Copper Bank	M	Mestizo
	Copper Bank	M	Mestizo
	Copper Bank		



Attendance Sheet for **Civil Society, Government Officials, Statutory Bodies & Other Key Stakeholders**
Public Consultations for BL-L1042

Date: April 11, 2023
Location: Sarteneja Community Centre

PRINT NAME	ORGANIZATION	JOB TITLE	COMMUNITY SERVED
	Belice Coast Guard	Petty Officer Class 3	Sector North
	Min. of Finance	Economist	
	Min. of Econ. Dev.	Sr. Economist	
	Library service	Librarian	James Donath
	Belice Coast Guard	Sector North Commander	SECTOR NORTH
	MBECA	M&E officer	
	Fisheries Dept.	Fisheries Officer	National
	MBECA	PR Officer	
	CEU - MED	Env. Social Sp.	National



Attendance Sheet for **Civil Society, Government Officials, Statutory Bodies & Other Key Stakeholders**

Public Consultations for BL-L1042

Date:

April 11, 2023

Location:

Sartenga Community Centre

PRINT NAME	ORGANIZATION	JOB TITLE	COMMUNITY SERVED
			Sartengon
			SAREHA
			Sarteneja
	None	Fishermen	Sarteneja
		Fisherman	COPPER Bank



Belize City Participants



Attendance Sheet for **Fisherfolks**
Public Consultations for BL-L1042

Date: April 13th 2023
Location: Biltmore

PRINT NAME	COMMUNITY	GENDER (M/F)	ETHNIC GROUP
	Belize city	M	Mestizo Mestizo
	Belize city	M	Mestizo Mestizo
	Belize city	M	Mestizo
	Belize city	M	mestizo
		M	
	Belize city	M	
	Belize City	M	
	Copper Bank.	M	mestizo
	Sustenejo Village	M	Mestizo
	Belize City	M	"
	Bee	M	"
	Bee	M	"



Attendance Sheet for **Fisherfolks**
Public Consultations for BL-L1042

Date:
Location:

PRINT NAME	COMMUNITY	GENDER (M/F)	ETHNIC GROUP
	Bze	M	Mestizo
	Bze	M	Mestizo
	Bze	M	Mestizo
	Bze	M	Mestizo
	Bze	M	Mestizo
	Bze	M	belizian
	Bze	M	belizian
	Bze	M	Belizian
	Corozal	M	Mestizo
	BZE	M	Mestizo



Attendance Sheet for **Civil Society, Government Officials, Statutory Bodies & Other Key Stakeholders**
Public Consultations for BL-L1042

Date: April 13th 2023
Location: B. Home Plaza

PRINT NAME	ORGANIZATION	JOB TITLE	COMMUNITY SERVED
	BCCI	Policy Analyst	Belize - Private Sector
	CZMAI	Sport Fish Coordinator	Belize
	CZMAI	MSP Process Lead	Belize
	Ocean9	Outreach Director	Belize
	RECTRAI OC	Executive Director	Belize
	IDB	Financial Mgmt Specialist	Belize
	MED	Senior Economist	
	MOF	Economist I	
	CEU-MID	LEAD CONSULTANT	GCB



Attendance Sheet for **Civil Society, Government Officials, Statutory Bodies & Other Key Stakeholders**

Public Consultations for BL-L1042

Date: April 13th, 2023

Location: Belmopan

PRINT NAME	ORGANIZATION	JOB TITLE	COMMUNITY SERVED
	Galen University	Provost	Belize
	GALEN	DEAN	BELIZE
	Galen University	Program Coordinator	Belize
	Labour Dept.	Employment Officer	Belize
	University of Belize	Dean of FST	Belize
	Min. of Natural Resources	Dir. of Policy Planning	Belize
	Belize High Seas Fisheries Unit	Fishing office	Belize
	Belize High Seas Fisheries Unit	Fishing office	Belize
	IDB	Consultant	Belize
	Northern Fisheries	Mgr.	Belize
	Central Bank	Asst. Manager	Belize
	Belize Tourism Board	sustainable tourism coordination	Belize



Attendance Sheet for **Civil Society, Government Officials, Statutory Bodies & Other Key Stakeholders**

Public Consultations for BL-L1042

Date: April 13th, 2023

Location: Belmopan Plaza

PRINT NAME	ORGANIZATION	JOB TITLE	COMMUNITY SERVED
	Fisheries Dept.	Assistant Fisheries Officer	Country
	MBECA	M&E officer	
	Conservation / Rights	Consultant	Belize
	Bze Fisheries Dept	Fisheries Officer	Belize
	MBECA	PR Officer	—
	MBECA	office Assistant	Belize
	BCG	Sector Commander	Belize
	Ministry of Tourism	Business Development Investment Officer	Country
	Central Bank of Belize	Economist	Financial Sector
	CARM Secretariat	Advisor	—
	BFCA (Executive)	Fisheries Officer	Belize City



Independence Village Participants



Attendance Sheet for Fisherfolks
Public Consultations for BL-L1042

Date: April 18, 2023
Location: Independence Village

PRINT NAME	COMMUNITY	GENDER (M/F)	ETHNIC GROUP
	P.G	M	Maya
	P.G.	M	mestizo
	P.G	M	Mestizo
	P.G	M	Mestizo
	Independence	M	Mestizo
	P.G	M	Maya
	Independence	M	Creole
	Ind	M	Creole
	Independence	M	Manby River/Creole
	Riversdale	M	Mestizo
	Riversdale	M	Mestizo
	Riversdale	M	Spanish



Attendance Sheet for Fisherfolks
Public Consultations for BL-L1042

Date: April 18, 2023
Location: Independence Village

PRINT NAME	COMMUNITY	GENDER (M/F)	ETHNIC GROUP
	Mango	M	español
	P.G	M	Creole
	P.G	F	mestizo
	P.G	F	Ketchi
	R.P.G	F	ketchi
	P.G	M	ketchi
	Manby/Independence	M	Mestizo
	Mango Creek	M	Spanish
	Punta Gorda	M	Spanish
	Punta Gorda	M	Mestizo
	P.G	M	Spanish
	P.G.	M	Spanish



Attendance Sheet for Fisherfolks
Public Consultations for BL-L1042

Date: April 18, 2023
Location: Independence Village

PRINT NAME	COMMUNITY	GENDER (M/F)	ETHNIC GROUP
	Independence	F	Creole
	Placencia	M	Creole
	Independence	M	Creole
	Independence	M	Mestizo
	R. Dale	F	Mestizo
	R. Dale	M	Creole



Attendance Sheet for Fisherfolks
Public Consultations for BL-L1042

Date: April 18, 2023
Location: Independence Village

PRINT NAME	COMMUNITY	GENDER (M/F)	ETHNIC GROUP
	P. G	M	Spanish
	P. G	M	C.R- Creole
	P. G	M	Spanish
	P. G	M	Spanish
	Rivers Dale	M	Spanish
	Independence	M	Cast Indian-Mix
	Independence	M	Mestizo
	Independence	M	Mestizo
	P. G	M	Maya
	Independence	M	Mestizo
	Independence	M	Spanish
	Rivers Dale	F	Spanish



Date: April 18, 2023
Location: Independence Village

Attendance Sheet for Fisherfolks
Public Consultations for BL-L1042

PRINT NAME	COMMUNITY	GENDER (M/F)	ETHNIC GROUP
	P.G.	W	Costa Rican
	P.G.	M	Mestizo
	P.G.	M	Garifuna
	IND	M	Mestizo
	I-ND	M	Mestizo
	Independence	M	Mestizo



Date: April 18, 2023
Location: Independence Village

Attendance Sheet for Fisherfolks
Public Consultations for BL-L1042

PRINT NAME	COMMUNITY	GENDER (M/F)	ETHNIC GROUP
	Dougriga	M	Mestizo
	Dougriga	M	Spanish
	Dougriga	F	East Indian
	Dougriga	F	Mestizo
	Riversdale	M	
	Riversdale	M	Mestizo
	Riversdale	F	Mestizo
	Riversdale	M	Mestizo
	Riversdale	M	Mestizo
	Riversdale	M	East Indian



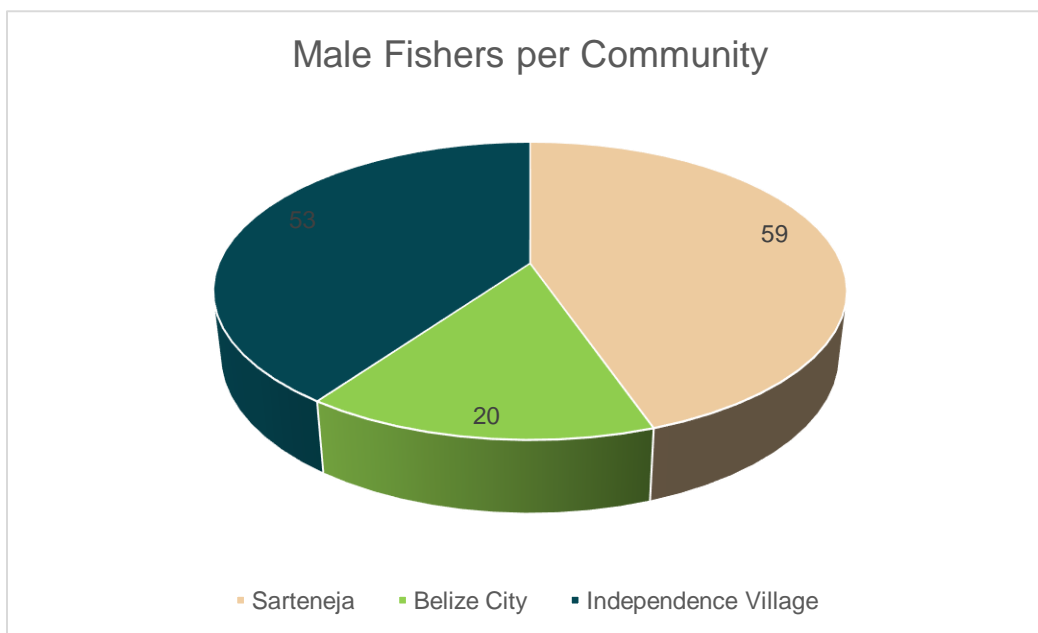
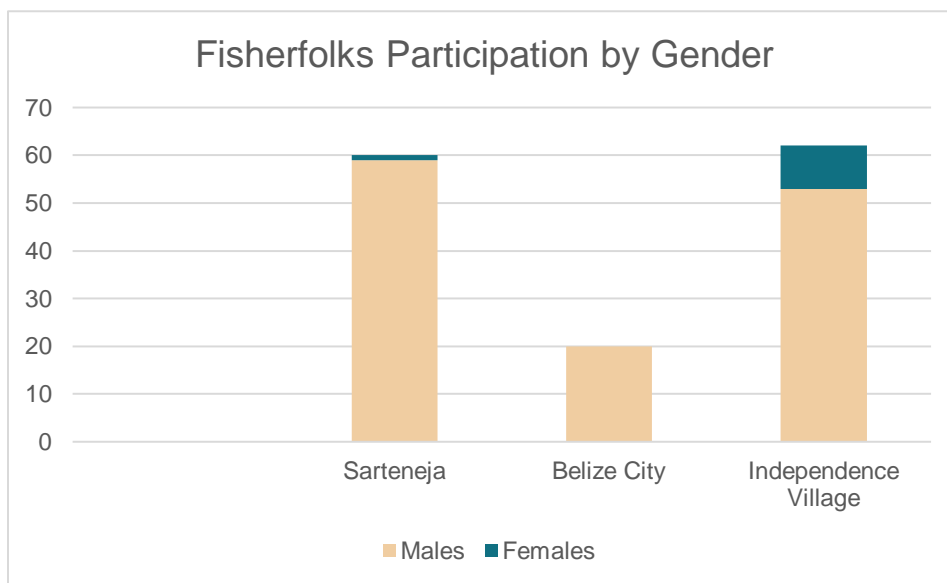
Attendance Sheet for **Civil Society, Government Officials, Statutory Bodies & Other Key Stakeholders**
Public Consultations for BL-L1042

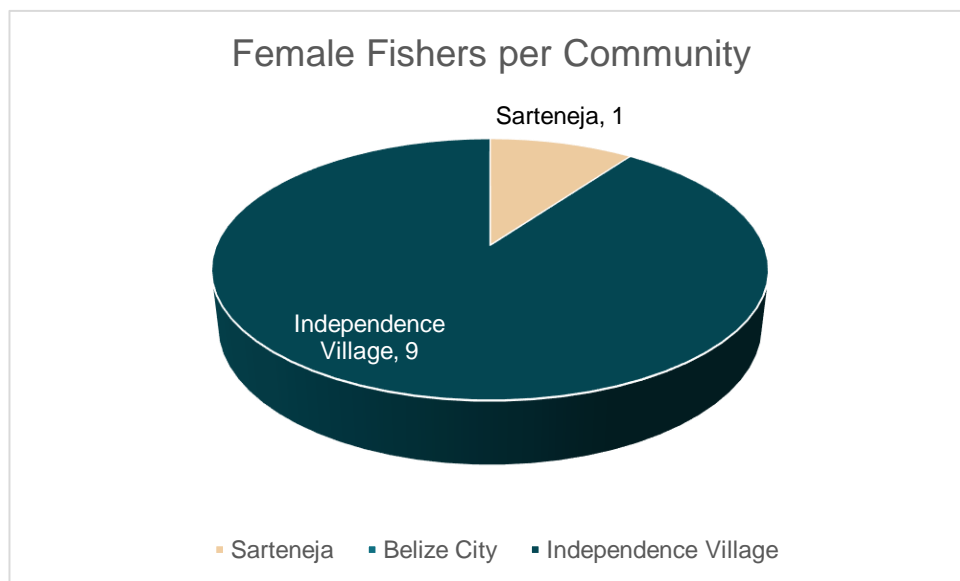
Date: April 18, 2023
Location: Independence Village

PRINT NAME	ORGANIZATION	JOB TITLE	COMMUNITY SERVED
	Fisheries Dept	Assistant Fisheries Officer	
	Fisheries Dept.	Fisheries Officer	Bee City
	Labour Department	Employment Officer	Public
	Independence Village Council	Office Admin	Ind. Village
	Environmental Defense Fund, Project Manager		Punta Gorda
	IDB	Consultant	Belize
	MBECA	PR Officer	Belize City
	MBECA	M&E officer	
	CEU - MED	Env. & Social Sy	Belize



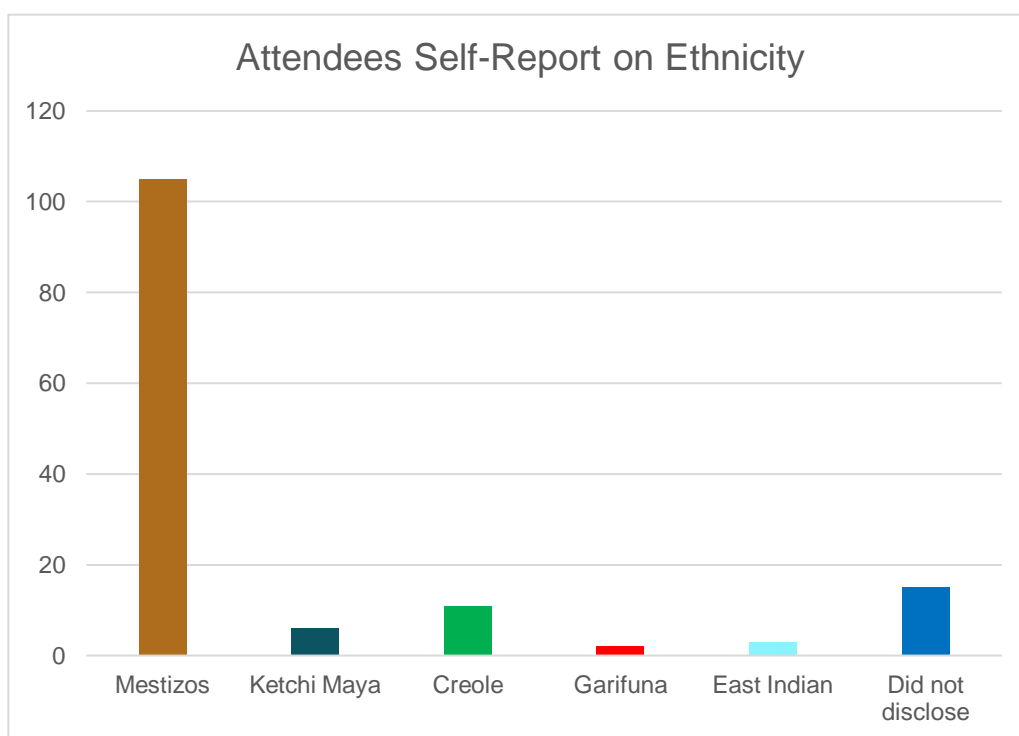
ANNEX II: DEMOGRAPHICS OF FISHERFOLKS – BY GENDER







ANNEX III: DEMOGRAPHICS OF FISHERFOLKS – BY ETHNICITY





ANNEX IV: AGENDA FOR PUBLIC CONSULTATIONS

Agenda for public consultations in Sarteneja and Independence Village

Time Allotted	Topic	Presenter
2:00 – 2:15 p.m.	<ul style="list-style-type: none"> • Introductions 	Ministry of Blue Economy & Civil Aviation (MBECA namely Belize Fisheries Department - BFD), Blue Economy Unit (BEU) & Central Executing Unit (CEU) – Ministry of Economic Development Right Insights
2:15 – 2:45 p.m.	BL-L1042 project overview <ul style="list-style-type: none"> • rationale • components • results of environmental & social aspects • mitigation plan • grievance mechanism 	Central Executing Unit Belize Fisheries Department Right Insights
2:45 – 3:30 p.m.	Small Group Discussion on BL-L1042: <ul style="list-style-type: none"> • priorities/needs of fisher-folks • challenges & limitations • possible risks • mitigation actions 	Led by Right Insights
3:30 – 3:50 p.m.	Closing questions & answers	CEU, BFD & BEU
3:50 – 4:00 p.m.	<ul style="list-style-type: none"> • Way forward • Closing remarks 	CEU, BFD & BEU



Agenda for public consultations in Belize City – 13.04.23

Time Allotted	Topic	Presenter
1:00 – 1:15 p.m.	<ul style="list-style-type: none"> • Introductions 	<p>Ministry of Blue Economy & Civil Aviation (MBECA namely Belize Fisheries Department - BFD), Blue Economy Unit (BEU) & Central Executing Unit (CEU) – Ministry of Economic Development</p> <p>Right Insights</p>
1:15 – 1:45 p.m.	<ul style="list-style-type: none"> • BL-L1042 project overview • rationale • components • results of environmental & social aspects • mitigation plan • grievance mechanism 	<p>Central Executing Unit Belize Fisheries Department Right Insights</p>
1:45 – 2:30 p.m.	<p>Small Group Discussion on BL-L1042:</p> <ul style="list-style-type: none"> • priorities/needs of fisher-folks • challenges & limitations • possible risks • mitigation actions 	Led by Right Insights
2:30 – 2:50 p.m.	Closing questions & answers	CEU, BFD & BEU
2:50 – 3:00 p.m.	<ul style="list-style-type: none"> • Way forward • Closing remarks 	CEU, BFD & BEU



ANNEX V: GUIDE FOR SMALL GROUP DISCUSSION

To guide the small group activity participants will be divided into 4 groups and focus on the following sub-themes. Writing paper and markers will be provided to each group so that key points can be recorded by a rapporteur.

- Priorities/needs of fisherfolks
- Challenges & limitations
- Possible risks
- Mitigation actions

Each sub-theme will be discussed using specific questions suggested below and participants will be allowed 25 minutes to discuss and then use remaining time (20 minutes) to report to larger group:

1. *Priorities/Need of Fisherfolks*

- What support would you recommend for fishers in your community?
- Are there any specific areas you would like to know more about or obtain assistance with?
- What specific areas of support you would like from GoB, NGOs or private sector as fisherfolks?

2. *Challenges & Limitations*

- What are the greatest barriers faced by fisherfolks in Belize?
- Are there specific programs, services or support to assist fishers in overcoming the barriers you have identified?
- How can future projects assist fishers in addressing challenges or limitations in the sector?

3. *Possible Risks*

- For future projects that will support fisherfolks, what risks must be considered?
- Describe these risks.

4. *Mitigation Actions*

- For future projects that will support fisherfolks, what action must be considered to ensure it meets the needs of fisherfolks?
- Describe your recommendations for future approaches to meet the needs of fisherfolks.



ANNEX VI: COPY OF INVITATION TO STAKEHOLDERS ATTENDING PUBLIC CONSULTATION



You are cordially invited!

Public Consultations

**BL-L1042 Project: Promoting
Sustainable Growth in the Blue
Economy**

**Led by the Ministry of Blue Economy
& Civil Aviation (MBECA) and the
Fisheries Department to discuss BL-
L1042**

Dates:

- April 11th 2023: 2 p.m. at Sarteneja Village Community Center (Corozal)
- April 13th 2023: 1:00 p.m. at Belize Biltmore Plaza (Belize City)
- April 18th 2023: 2 p.m. at The SENTER, Fadden Avenue, Independence Village (Stann Creek)



1688 Seashore Drive
Buttonwood Bay Area
P.O. BOX 2289
Belize City, BELIZE
Phone No.: 223-2768/223-5937

Please Quote:
Ref: GEN/9/02/2023 (25) Vol. III

March 31, 2023

Subject: Invitation to Public Consultation for Disclosure of BL-L1042 Project: Promoting Sustainable Growth in the Blue Economy

Dear valued Stakeholder,

The Government of Belize through the Ministry of Blue Economy & Civil Aviation (MBECA) and the Ministry of Finance, Economic Development, and Investment is in the process of finalizing a loan operation with the Inter-American Development Bank (IDB) to fund a five-year project entitled "Promoting Sustainable Growth in the Blue Economy" (BL-L1042). The main objective of the project is to improve income generation capacity of artisanal fisherfolks and to maintain export levels of fisheries products considering the sustainable use of oceanic resources within Belize's blue economy framework. The specific objectives are the following: (a) enhancing the Government's ability to sustainably manage the key species in the fisheries sector and; (b) supporting the successful implementation of individual or Group Business Plans for artisanal fisherfolks aimed at promoting the adoption of sustainable technologies and best fishing practices, as well as the diversification of their income. These objectives are to be achieved by strengthening the capacities of MBECA and the Fisheries Department for the sustainable and resilient management of the fisheries sector, and by providing direct support to artisanal fisherfolk to improve their livelihoods and promote best fishing practices.

Public consultations will be held to disclose information on the project and obtain stakeholders feedback. See Annex I for the schedule and location of the public consultations.

MBECA cordially invites you to participate at any of the public consultations being hosted. See Annex II for agenda.

Kindly respond to this correspondence by Tuesday April 4, 2023, to Mr. Dwight Neal at dneal.ceu@med.gov.bz and copy Ms. Gisela Correa at gisela.correa@blueeconomy.gov.bz, confirming participation and providing the name and contact information of you or a representative to attend the public consultations by location.

With much anticipation we look forward to the confirmation of attendance.

Sincerely,

Kennedy Carrillo
Chief Executive Officer
Ministry of Blue Economy and Civil Aviation

Email: info@blueeconomy.gov.bz



Ministry of Blue Economy
& Civil Aviation

1688 Seashore Drive
Buttonwood Bay Area
P.O. BOX 2289
Belize City, BELIZE
Phone No.: 223-2768/223-5937

Annex I: Schedule of Public Consultations

Public Consultation for Disclosure of BL-L1042 Project: Promoting Sustainable Growth in the Blue Economy			
Area	Date	Time	Venue
1. Northern Belize: Corozal District	Tuesday April 11, 2023	2:00 p.m. – 4:00 p.m.	Sarteneja Village Community Center, Corozal District
2. Central Belize: Belize District	Thursday April 13, 2023	1:00 p.m. – 3:00 p.m.	Belize Biltmore Plaza, Belize City, Belize District
3. Southern Belize: Stann Creek District	Tuesday April 18, 2023	2:00 p.m. – 4:00 p.m.	The SENter, Fadden Avenue, Independence Village, Stann Creek District



1688 Seashore Drive
Buttonwood Bay Area
P.O. BOX 2289
Belize City, BELIZE
Phone No.: 223-2768/223-5937

Annex II: Agenda for Public Consultations

Agenda for Public Consultations - Sarteneja and Independence

Time Allotted	Topic	Presenter
2:00 – 2:15 p.m.	<ul style="list-style-type: none"> • Introductions 	Ministry of Blue Economy & Civil Aviation (MBECA), the Fisheries Department - BFD) & the Central Executing Unit (CEU) Right Insights
2:15 – 2:45 p.m.	<ul style="list-style-type: none"> • BL-L1042 Project Overview • Rationale • Components • Results of environmental & social aspects • mitigation plan • grievance mechanism 	Central Executing Unit Fisheries Department Right Insights
2:45 – 3:30 p.m.	Small Group Discussion on BL-L1042: <ul style="list-style-type: none"> • Priorities/needs of fisherfolks • Challenges & limitations • Possible Risks • Mitigation Actions 	Led by Right Insights
3:30 – 3:50 p.m.	Closing questions & answers	MBECA Fisheries Department Central Executing Unit
3:50 – 4:00 p.m.	<ul style="list-style-type: none"> • Way forward • Closing remarks 	MBECA Fisheries Department Central Executing Unit



Ministry of Blue Economy
& Civil Aviation

1688 Seashore Drive
Buttonwood Bay Area
P.O. BOX 2289
Belize City, BELIZE
Phone No.: 223-2768/223-5937

Agenda for Public Consultations – Belize City

Time Allotted	Topic	Presenter
1:00 – 1:15 p.m.	<ul style="list-style-type: none"> • Introductions 	Ministry of Blue Economy & Civil Aviation (MBECA), the Fisheries Department - BFD) & the Central Executing Unit (CEU) Right Insights
1:15 – 1:45 p.m.	<ul style="list-style-type: none"> • BL-L1042 Project Overview • Rationale • Components • Results of environmental & social aspects • mitigation plan • grievance mechanism 	Central Executing Unit Fisheries Department Right Insights
1:45 – 2:30 p.m.	Small Group Discussion on BL-L1042: <ul style="list-style-type: none"> • Priorities/needs of fisherfolks • Challenges & limitations • Possible Risks • Mitigation Actions 	Led by Right Insights
2:30 – 2:50 p.m.	Closing questions & answers	MBECA Fisheries Department Central Executing Unit
2:50 – 3:00 p.m.	<ul style="list-style-type: none"> • Way forward • Closing remarks 	MBECA Fisheries Department Central Executing Unit



ANNEX VII: PHOTOS⁷ OF PUBLIC CONSULTATIONS AT 3 COASTAL COMMUNITIES IN BELIZE

Sarteneja Village – 11th April 2023



⁷ Photos shared protect participants' right to remain unidentified



Belize City – 13th April 2023





Independence Village – 18th April 2023





ANNEX VIII: COPIES OF POWERPOINT™ PRESENTATIONS IN ENGLISH & SPANISH RESPECTIVELY

Project Overview & Rationale (in English)

1

2

3

4

5

6



Project Overview & Rationale (in English) cont.

Project Components

Component 1
Institutional strengthening for the sustainable and resilient management of the fisheries sector (IDB: US\$ 4,849,222)

Subcomponent 2: Knowledge management for the sustainable development of the Bahian fishing industry.

Subcomponent 3: Knowledge management for the sustainable development of the Bahia lobster and queen conch fisheries industry.

Subcomponent 4: Information Management System for the Fisheries sector.

Project Components

Component 2
Direct support to artisanal fisheries (IDB: US\$1,654,072)

Fisheries apply for a grant (Individual and/or up to US\$ 5,000)

Fisheries (as individual or group business plan) contribute at least 20% of the total value (in-kind or in cash)

Factors which will be considered – innovation & environmental, social sustainability of the business plans

Matching grants will finance technical assistance

of disbursement of trawlers & respective amounts to be defined based on the needs of each plan

What results are expected?

Impact and results indicators	Measurement period	Rationale for the selection
• Maintained or increased volume of exports of fishery products from Bahia		Measures the impact of the program on the exports of fishery products derived from a better management and the adoption of improved fishing practices in the artisanal fishing sector of Bahia.
• Fisheries' average monthly income (gross)		Measures improved livelihoods of participants in the fisheries sector.
• Updated Lobster Management Plan officially approved by the Minister	Years 1 and 5	Measures new management measures for Bahian fisheries, as a proxy for better sustainability.
• Updated Conch Management Plan officially approved by the Minister		
• Share of catch and lobster landings from artisanal fisheries that meet regulatory quality standards		Measures the impact of the adoption of new technologies and best fishing practices.
• Beneficiary fisheries who adopt technologies as part of their individual or group Business Plans		Measures the effectiveness of the matching grants program.

Questions?

Placeholder for Mr. Nivaldo's contact info

Thank you!



Project Overview & Rationale (adapted in Spanish)

BL-L1042 - PROMOVENDO EL CRECIMIENTO SOSTENIBLE EN LA ECONOMÍA AZUL

Presentado por:
Mr. Dwight Mack, Project Manager,
Central Consulting Unit,
Ministry of Finance, Economic Development, and
Investment.

1

DESCRIPCIÓN DEL PROYECTO

OBJETIVO GENERAL.
Mejorar la capacidad de generación de ingresos de los pescadores artesanales y mantener los niveles de exportación de productos pesqueros y a la misma vez garantizar el uso sostenible de los recursos acuáticos.

OBJETIVO ESPECÍFICO

- mejorar la capacidad del Gobierno para gestionar de manera sostenible las especies clave en el sector pesquero;
- promover la adopción de tecnologías sostenibles y mejores prácticas de pesca por parte de los pescadores artesanales.

2

¿POR QUÉ NOS INVOLUCRAMOS EN ESTE PROYECTO?

- + disminuir la vulnerabilidad del sector frente a huracanes y otros riesgos climáticos, particularmente a lo largo de las áreas costeras
- + el sector es altamente dependiente de 2 especies - langosta espinosa y caracol reino - por lo que cualquier choque pueda afectar al sector

IMPACTO DEL PROYECTO

- + promover la diversificación del portafolio de productos pesqueros para hacer más resiliente al sector.

3

¿Quién se beneficiará de cada componente?

Component 1:

Instituciones gubernamentales, específicamente el Ministerio De Economía Azul Y Aviación Civil (Ministry of Blue Economy & Civil Aviation - MBECA) y beneficiar a todas las pesquerías a través del Departamento De Pesca de Belice (Belize Fisheries Department).

4

¿Quién se beneficiará de cada componente?

Component 2:

Beneficiar directamente a por lo menos 200 pescadores comerciales artesanales (o aproximadamente 1000 personas), a través del programa de subvenciones de contrapartida.

5

Componentes

Componente 1

Fortalecimiento institucional para la gestión sostenible y resiliente del sector pesquero (IDB USD 4,540,000).

Componente 2

Apoyo directo a los pescadores artesanales: dotación de contrapartida con asistencia técnica (IDB USD 604,000).

6



Project Overview & Rationale (adapted in Spanish) cont.

Promoting Growth in Sustainable Blue Economy Program

Actividades del Proyecto

1. Investigación Pesquera

- Datos sobre recursos de peces y técnicas de pesca relevantes en la Zona de Pesca de Acceso Administrado 9 de Belice recopilados a través de campañas de pesca exploratoria.
- Evaluación integral de la población de recursos de peces en el Área de pesca 9 realizada utilizando datos de campañas de pesca exploratoria.
- Datos sobre recursos de peces y técnicas de pesca relevantes en la Zona de Pesca de Acceso Administrado 9 de Belice recopilados a través de campañas de pesca exploratoria.
- Plan de Manejo para la pesca de peces en la Zona de Pesca 9 desarrollado y validado. Evaluación Nacional de la Población de Langosta Suprema del Cambio realista. Plan de Manejo de Langosta actualizado y validado. Plan de manejo de caracoles actualizado.
- Plan de Comunicación y Difusión del Programa elaborado e implementado. Se desarrollaron e implementaron bases de datos de pesquerías/sistemas de tractabilidad digitalizados (incluido el libro de registro de capturas electrónicas), y se capacitaron al personal.
- Se desarrollaron el marco y los protocolos de MIV de la economía azul. Elaboración del plan nacional de sitios de desembarque de peces para Belice.

Promoting Growth in Sustainable Blue Economy Program

Actividades del Proyecto

3. Mercado

- Análisis de mercado de la pesca de peces desarrollado y validado.
- Desarrollada y validada una estrategia de mercado para agregar valor a la langosta.
- Una estrategia de mercado para agregar valor a la concha desarrollada y validada.

4. Apoyo a la cadena de valor

- Adquisición e instalación de un Sistema de Refrigeración con Planta Generadora.

5. Apoyo a pescadores Grupos/individual

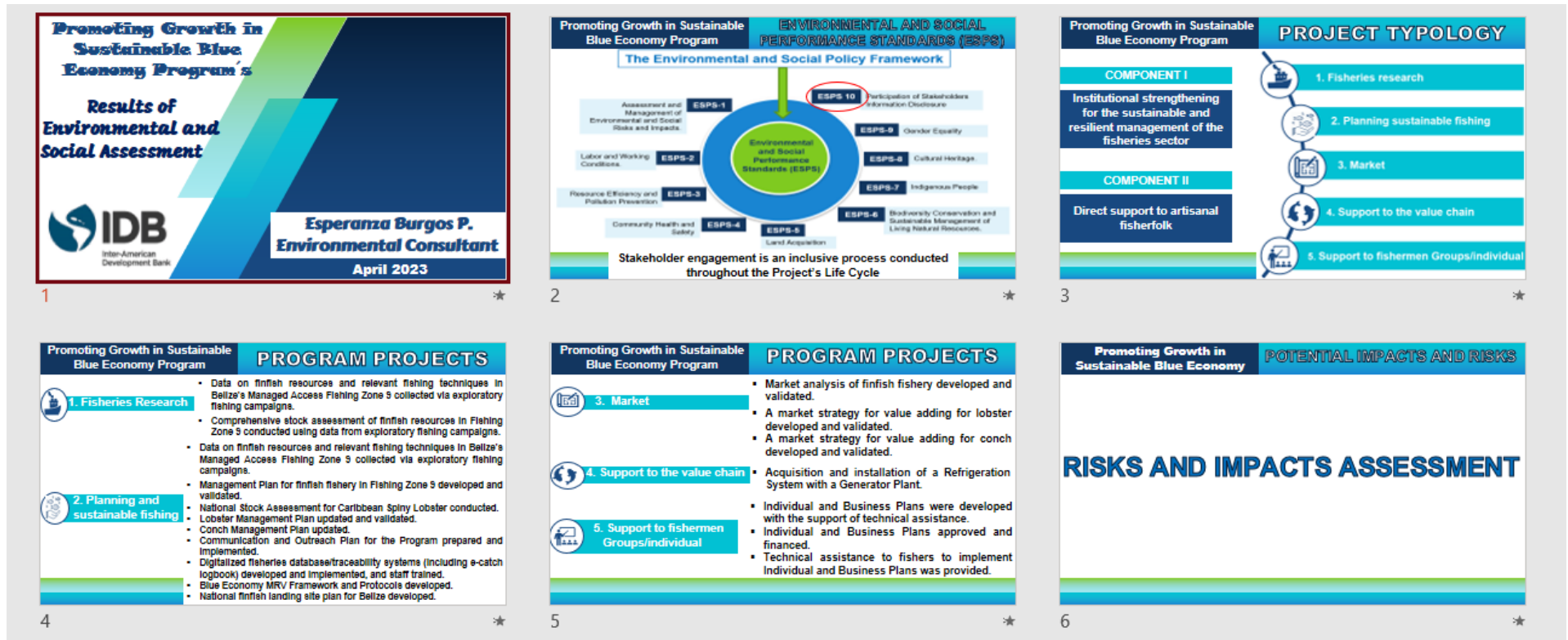
- Se desarrollaron Planes Individuales y de Negocios con el apoyo de asistencia técnica.
- Planes individuales y de Empresa aprobados y financiados.
- Se brindó asistencia técnica a pescadores para implementar Planes Individuales y de Negocios.

¿Preguntas?

¡Muchas Gracias!



Results of Environmental and Social Assessment (in English)





Results of Environmental and Social Assessment (in English) cont.

Promoting Growth in Sustainable Blue Economy Program POTENTIAL IMPACTS (1)

POSITIVE IMPACTS

Execution Stage

- Institutional strengthening.
- Improvement of sustainable economic activities.
- Increased partnership dynamics.
- Sustainable management of living resources

Operation/Close Stages

- Institutional strengthening.
- Improvement in the production chain.
- Participation of vulnerable groups.
- Strengthening the dynamics of associativity.

7



Promoting Growth in Sustainable Blue Economy Program POTENTIAL IMPACTS (2)

POTENTIAL NEGATIVE IMPACTS

Execution Stage

- Solid waste generation.
- Discharge of setline liquids.
- Generation of oily liquid waste.
- Wastewater generation.
- Gas emissions.
- Noise pollution.
- Bycatch.
- Overexploitation of fishing resources.
- Disruption of spawning time, migration, and peak abundance of fish.
- Fish processing waste.
- Temporary loss of access and use of the fishing zone.
- Temporary affection to maritime traffic.

8



Promoting Growth in Sustainable Blue Economy Program POTENTIAL IMPACTS

Operation/Close Stages

- Solid waste generation.
- Wastewater generation.

9



Promoting Growth in Sustainable Blue Economy Program POTENTIAL RISKS (1)

POTENTIAL RISKS

- Discarding fishing gear.
- Work accidents.
- Low participation of women.
- Delay for project start-up.
- Ship Collision Accidents.
- Fire on the ship.
- Increase in energy consumption.
- Sinking and grounding of the ship.

10



Promoting Growth in Sustainable Blue Economy Program POTENTIAL RISKS (2)

POTENTIAL RISKS

- Mechanical damage to the reef by deployment and recovery of the anchor.
- Generation of Ozone-Depleting Substances (ODS).
- Displacement of economic activities.
- Social conflicts due to unequal accessibility to areas.
- Change in the social environment due to project activities.
- Low participation of vulnerable groups.
- Disturbing national monuments and marine reserves.
- Fuel spill into the Ocean by the ship.
- Natural Disasters and Climate Change.

11



Promoting Growth in Sustainable Blue Economy Program MEASURES

NU	PROGRAM	ID	MEASURES
P1	Waste Management and Air Pollution	P 1-1	Solid and hazardous waste management.
		P 1-2	Hazardous Materials Management and Accidental Spill Prevention Measures.
		P 1-3	Setline wastewater and liquid management plan.
		P 1-4	Management of atmospheric emissions.
P2	Sustainable Management of Living Resources	P 2-1	Protection of living resources.
		P 2-2	Prevention of affection of protected areas.
		P 2-3	Control to prevent the introduction of alien species.
P3	Alternatives to avoid the impact of economic displacement during fisheries research activities	P 3-1	Substitution of fishing areas.
		P 3-2	Design an access plan for zone.
		P 3-3	Consultation workshops on accessibility to zone 8.
P4	Occupational Health	P 4-1	Management of occupational accidents, occupational hazards and risks.
P6	Participation of vulnerable groups	P 6-1	Linking vulnerable groups
		P 6-2	Plan for indigenous Peoples
		P 6-3	Plan of Action on Gender and Diversity
P8	Disasters Risks Prevention	P 8-1	Natural Disasters Risk Management Plan

12





Results of Environmental and Social Assessment (in English) cont.

Promoting Growth in Sustainable Blue Economy Program	POTENTIAL IMPACTS (1)
POSITIVE IMPACTS	
<u>Execution Stage</u>	
<ul style="list-style-type: none"> ▪ Institutional strengthening. ▪ Improvement of sustainable economic activities. ▪ Increased partnership dynamics. ▪ Sustainable management of living resources 	
<u>Operation/Close Stages</u>	
<ul style="list-style-type: none"> ▪ Institutional strengthening. ▪ Improvement in the production chain. ▪ Participation of vulnerable groups. ▪ Strengthening the dynamics of associativity. 	

7

★

Promoting Growth in Sustainable Blue Economy Program	POTENTIAL IMPACTS (2)
POTENTIAL NEGATIVE IMPACTS	
<u>Execution Stage</u>	
<ul style="list-style-type: none"> ▪ Solid waste generation. ▪ Discharge of setline liquids. ▪ Generation of oily liquid waste. ▪ Wastewater generation. ▪ Gas emissions. ▪ Noise pollution. ▪ Bycatch. ▪ Overexploitation of fishing resources. ▪ Disruption of spawning time, migration, and peak abundance of fish. ▪ Fish processing waste. ▪ Temporary loss of access and use of the fishing zone. ▪ Temporary affectation to maritime traffic. 	

8

★

Promoting Growth in Sustainable Blue Economy Program	POTENTIAL IMPACTS
<u>Operation/Close Stages</u>	
<ul style="list-style-type: none"> ▪ Solid waste generation. ▪ Wastewater generation. 	

9

★

Promoting Growth in Sustainable Blue Economy Program	POTENTIAL RISKS (1)
POTENTIAL RISKS	
<ul style="list-style-type: none"> ▪ Discarding fishing gear. ▪ Work accidents. ▪ Low participation of women. ▪ Delay for project start-up. ▪ Ship Collision Accidents. ▪ Fire on the ship. ▪ Increase in energy consumption. ▪ Sinking and grounding of the ship. 	

10

★

Promoting Growth in Sustainable Blue Economy Program	POTENTIAL RISKS (2)
POTENTIAL RISKS	
<ul style="list-style-type: none"> ▪ Mechanical damage to the reef by deployment and recovery of the anchor. ▪ Generation of Ozone-Depleting Substances (ODS). ▪ Displacement of economic activities. ▪ Social conflicts due to unequal accessibility to areas. ▪ Change in the social environment due to project activities. ▪ Low participation of vulnerable groups. ▪ Disturbing national monuments and marine reserves. ▪ Fuel spill into the Ocean by the ship. ▪ Natural Disasters and Climate Change. 	

11

★

Promoting Growth in Sustainable Blue Economy Program	MEASURES		
Nu	PROGRAM	ID	MEASURES
P1	Waste Management and Air Pollution	P 1-1	Solid and hazardous waste management.
		P 1-2	Hazardous Materials Management and Accidental Spill Prevention Measures.
		P 1-3	Setline wastewater and liquid management plan.
		P 1-4	Management of atmospheric emissions.
P2	Sustainable Management of Living Resources	P 2-1	Protection of living resources.
		P 2-2	Prevention of affectation of protected areas.
		P 2-3	Control to prevent the introduction of alien species.
		P 3-1	Substitution of fishing areas.
P3	Alternatives to avoid the impact of economic displacement during fisheries research activities	P 3-2	Design an access plan for zone.
		P 3-3	Consultation workshops on accessibility to zone 8.
			Management of occupational accidents, occupational hazards and risks.
P4	Occupational Health	P 4-1	Linking vulnerable groups
P6	Participation of vulnerable groups	P 6-2	Plan for Indigenous Peoples
		P 6-3	Plan of Action on Gender and Diversity
P8	Disasters Risks Prevention	P 8-1	Natural Disasters Risk Management Plan

12

★




Results of Environmental and Social Assessment (in English) cont.

Promoting Growth in Sustainable
Blue Economy Program

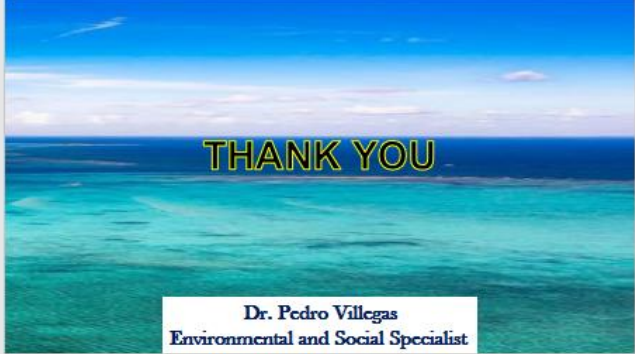
RESULTS

The operation was classified in **"CATEGORY B"** because the socio-environmental impacts identified are small-scale.



These impacts have the potential to be moderate, temporary, and localized, so mitigation measures are readily available.

13 ★



THANK YOU

Dr. Pedro Villegas
Environmental and Social Specialist

14 ★